

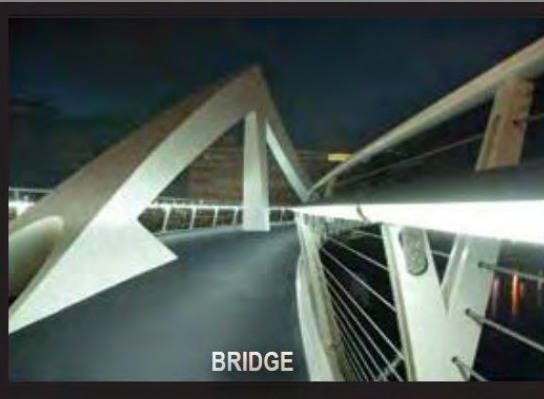


Waterproof Seal & Protect – Enhanced With Self-Cleaning Nano-Technology

PAINT-ON “RUBBER” FLOOR COATING

For All Concrete, Tile, Asphalt, Steel Surface's

For Residential and Industrial Application



- LOW VOC
- Roll, Brush Or Spray Applied
- NO Special Equipment Needed
- Water Clean-up



Because tires have high resistance to animal urine, bleach & other chemicals, Nutech Rubber Coating is perfect for animal shelters, as well as, animal transport equipment



Advantages of Rubber Flooring

- Non-Slip Even When Wet
- UV & Oil Resistant
- High Build Gap bridging
- Standing Stress Relief
- Paintable To Suit

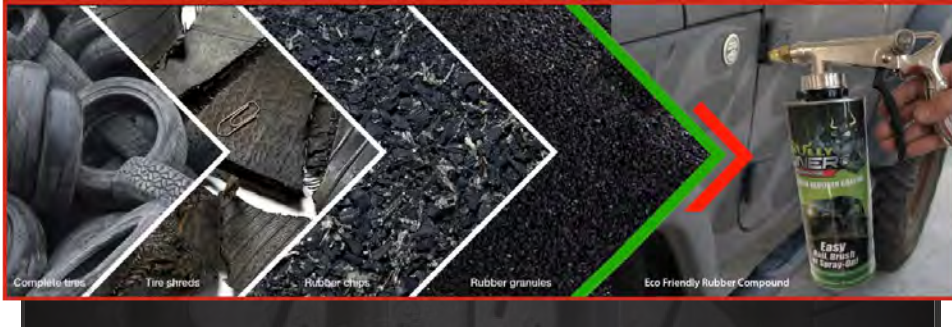


Waterproof Seal & Protect – New State-of-the-Art NANO Technology



BONDS TO:

- Driveway....
- Pavés
- Concrete
- Asphalt
- Wood & Tiles Decking
- Virtually any surface!
-



Enhanced with Self-Cleaning Nano-Technology

30 million tires are scraped each year in the U.S. alone. One 4 Litre of Bullyliner™ Rubber Coating recycles over 1kg of tires from our landfills putting it back into good use!

Easy to Apply: (For detailed instructions visit www.bullyliner.com.au)



Roll & Brush-on Application
 For Best Results use:
 1/4" nap Micro Fiber rollers
 & Regular house paint brushes
 (Available at the paint department)

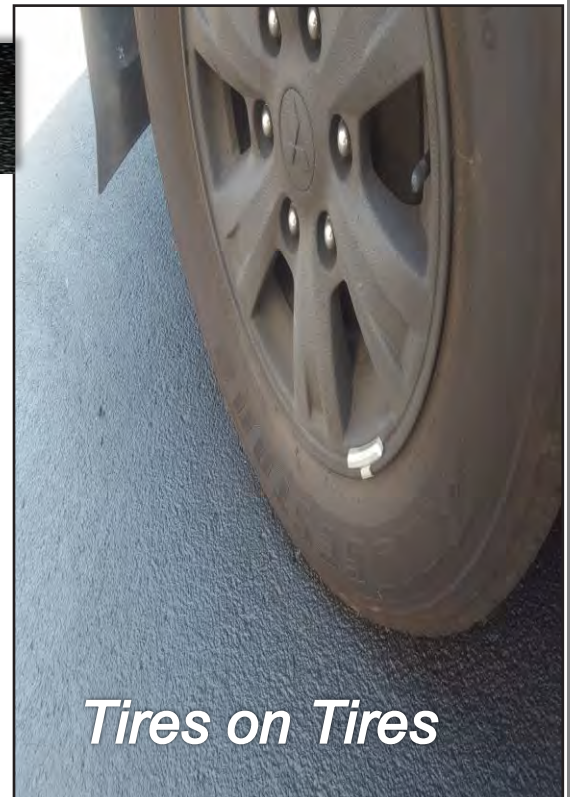


Spray-on Application
 Available separately is the
 Bully Spray Gun, made
 specifically for this product.
 (For details, see Store Manager or website below)

Easy clean



with water

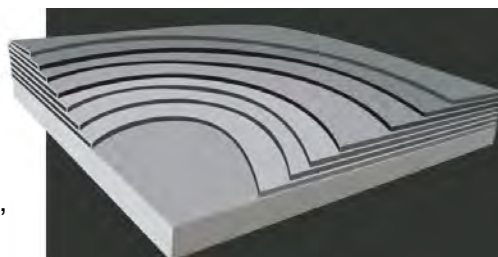


Tires on Tires

Put down layers of rubber to any thickness by applying multiple coats for protection or cushion as desired. Nutech Rubber coating will provide a 100% waterproof layer to any and all surfaces it's applied



For added flat surface waterproofing, using Poly Fabric will help bridge joints, gaps for a seamless waterproof finish.



Product manufactured by Nutech Paint Pty.Ltd. 2-4 Keppler Crt, Seaford, Vic, Australia . All rights reserved.

For more information sales@nutech.com.au | www.bullyliner.com